

## Behavioral Health Integration Quarterly Implementation Update

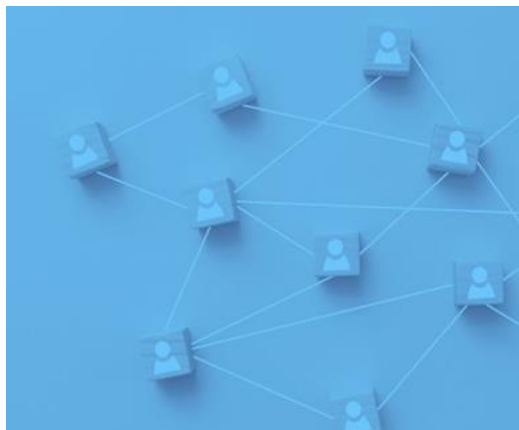


### **BHI Health Care Leadership Summit**

CQC is pleased to announce the 2026 [BHI Health Care Leadership Summit](#) on September 16–17, at the [Hilton San Diego Bayfront](#). The Summit will convene health care leaders from plans, provider organizations, purchasers and other stakeholders to collaborate on advancing integrated care across the state.

[Register Now](#)

Interested in sponsoring the Summit? Review the [Sponsorship Prospectus](#).



## **Cal-IN Peer Group for California BHI Leaders**

Join the [Cal-IN session](#) on Wed. March 25 (12 - 1 p.m.) to hear directly from an FQHC leader navigating the shift from co-location to integration. Daniela Vela Hernandez, VP/ Chief Behavioral Health Officer at Innercare, will share early challenges and practical lessons learned in workflows, team roles, and change management.

[Register Now](#)

## **Upcoming Events**

**[Practical Tips to Improve Measure Performance for Depression Screening and Follow up Quality Measure \(April 1, 1 - 2p.m. PT\)](#)**

This webinar shares key learnings and implementation insights from a six session Depression Screening and Follow up (DSF-E) Data Exchange Design Studio led by Connecting for Better Health (C4BH) and the Population Health Learning Center (PHLC).

The design studio brought together practices and payers to examine real-world barriers to submission of DSF-E screenings and accurate coding and submission of DSF-E follow up services.

### **[Catalyst for Health 2026](#) (April 22 - 23, Sacramento)**

Catalyst for Health, a CQC Forum, brings together leaders, innovators and implementers from across California's health care ecosystem to share strategies, build relationships and tackle the state's most pressing challenges annually. Registration is open and we encourage you to join and share within your networks

### **[CFHA Integrated Care Conference 2026](#) (October 8 - 10, St. Louis, MO)**

The Call for Proposals for the annual conference is open from February 1st to March 15th, 2026. Registration and award nominations will open in June.

### **Resources**

- [Behavioral Health Integration Services \(CMS\)](#) – 2026 updated billing codes
- [CoCM Billing Basics \(Meadows Mental Health\)](#) – Quick guide for CoCM billing codes
- [Progress Report: Psychiatric Collaborative Care Model \(MHTARI\)](#) - Analysis of national patterns in CoCM billing in commercial insurance plans

**Was this email forwarded to you?**  
[Subscribe to receive updates from CQC's BHI Initiative](#)

Find previous BHI Quarterly Updates [here](#).

The California Quality Collaborative (CQC) is a quality improvement program of the Purchaser Business Group on Health (PBGH). CQC's Behavioral Health Integration Initiative supports integrating behavioral health into primary care to improve access and outcomes across California. To learn more about this work, [visit our website](#).

Share

Forward

California Quality Collaborative  
[www.calquality.org](http://www.calquality.org)

[Preferences](#) | [Unsubscribe](#)