

A photograph of three young girls of diverse backgrounds (two white, one Black) sitting on the grass and looking at a book. The image is partially obscured by a blue overlay on the right side.

Monday, November 18, 2024

12 p.m. – 12:45 p.m.

BHI Workflows

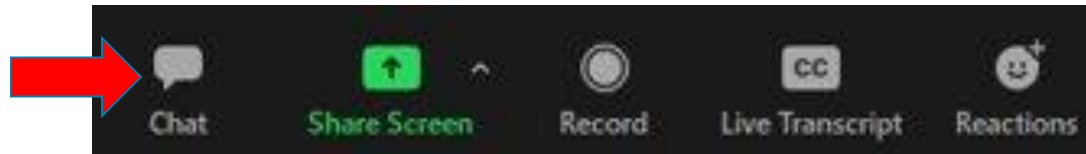
BHI-CYCLE Office Hours



California Quality
Collaborative

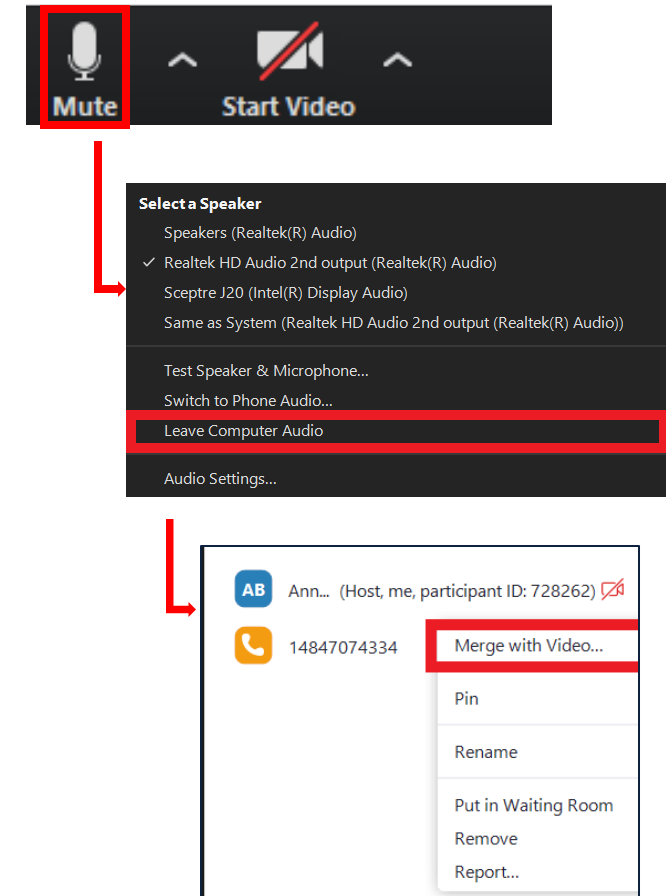
Zoom Tips

- Attendees are automatically **MUTED** upon entry
- Use the **chat box** for questions

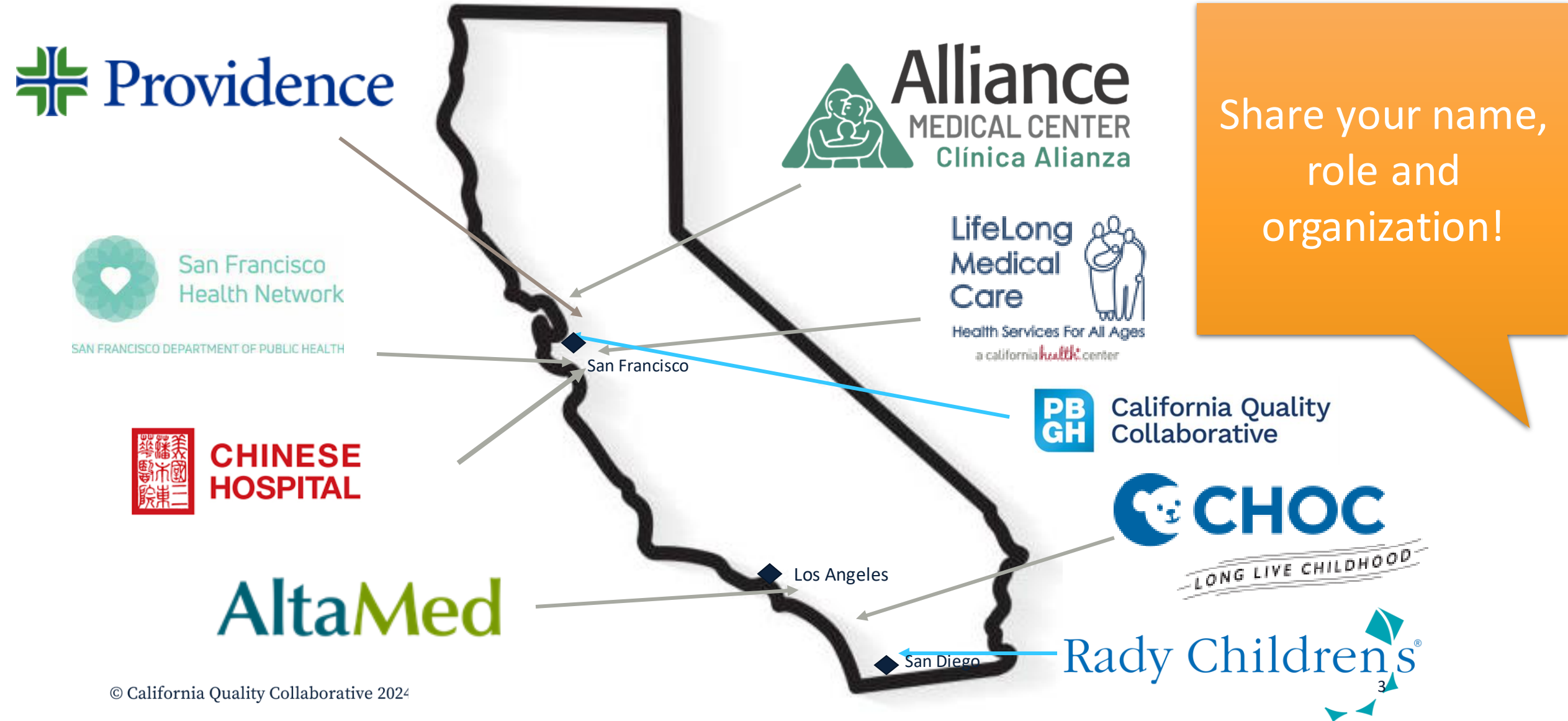


- Request closed captioning with 'Live Transcript' button
- Welcome to update name, pronouns and organization in your Zoom name
 - Right click on yourself → Rename
- **Direct message Anna Baer** if you have any technical issues

- If you've dialed in, please link your phone to your video/computer



Hello and Welcome!



BHI-CYCLE Peer Office Hour: BHI Workflows

Monday, November 18 (12:00-12:45)



Attend office hours to....

- Ask questions of each other and Rady Children's experts
- Share your own workflows



Kristina Mody

Director,
Practice
Transformation,
CQC



Anna Baer

Program Coordinator,
Care Transformation,
CQC



**Nicole Carr – Lee,
PsyD**

Director of Clinical
Operations and
Integration – Mental
Health Integration;
Rady Children's
Hospital – San Diego



**Jason Schweitzer,
MD**

Lead Psychiatrist,
Mental Health
Integration; Rady
Children's Hospital –
San Diego



Jen Zubyk

Quality
Improvement
Advisor; Rady
Children's Hospital –
San Diego

BHI Workflows – Open Q&A



Discussion Questions

1. What are some of the challenges your organization faces around BHI workflows?
2. How do your BHI workflows bake in collaboration?
Behavioral health join daily/weekly clinical huddles, scrub charts to ID potential BHI patients?
3. How do you communicate your BHI workflows or BHI workflows changes with your pediatric primary care teams?
4. How do you onboard or train new PCPs, office staff, MAs to your BHI workflows?



Do you want to gain new tools to help better healthcare quality improvement projects at your organization?

SIGN UP: [Registration Form](#)

SIGN UP TODAY for Model for Improvement

A virtual learning series aimed at giving learners the tools to identify, test and launch improvements to better health quality.

Timeframe: Launching November 2024

Participation: Complete self-guided learning modules at your own pace

Eligibility: Any learner from a participating provider organization who leads and/or works on quality improvement projects

Cost: FREE with your organization's participation in BHI - CYCLE



Support and education
on quality improvement

Self-paced learning
modules for team and
cohort collaboration



Resource library to
support learning and use
of new skill building

For more information contact Anna Baer, Program Coordinator,
abaer@pbgh.org

Upcoming Events

BHI – CYCLE Commons: BHI Teams

- Monday, December 2, 12 p.m. – 1 p.m.
- Highlight recommendations around BHI team engagement, training, quality control and collaboration (virtual, hybrid and in-person)
- *Peer Presenter:* Alliance Healthcare

BHI – CYCLE Commons: Screening

- Monday, January 6, 12 p.m. – 1 p.m.
- Share measurement based-care framework, screening successful practices (including ACES), and opportunities for optimization
- *Peer Presenter:* Providence

[Optional] BHI – CYCLE Peer Office Hour: BHI Financing and Sustainability

- Monday, January 21, 12 p.m. – 12:45 p.m. (Rady Children's Representative in attendance)



California Quality
Collaborative

Thank you!