



# Hello and welcome!





























# Respect

Acknowledge & affirm who I am and what I bring.



*Practice Transformation Initiative, a program of:*

8/30/17



# Inclusion

Invite in and hear my voice!

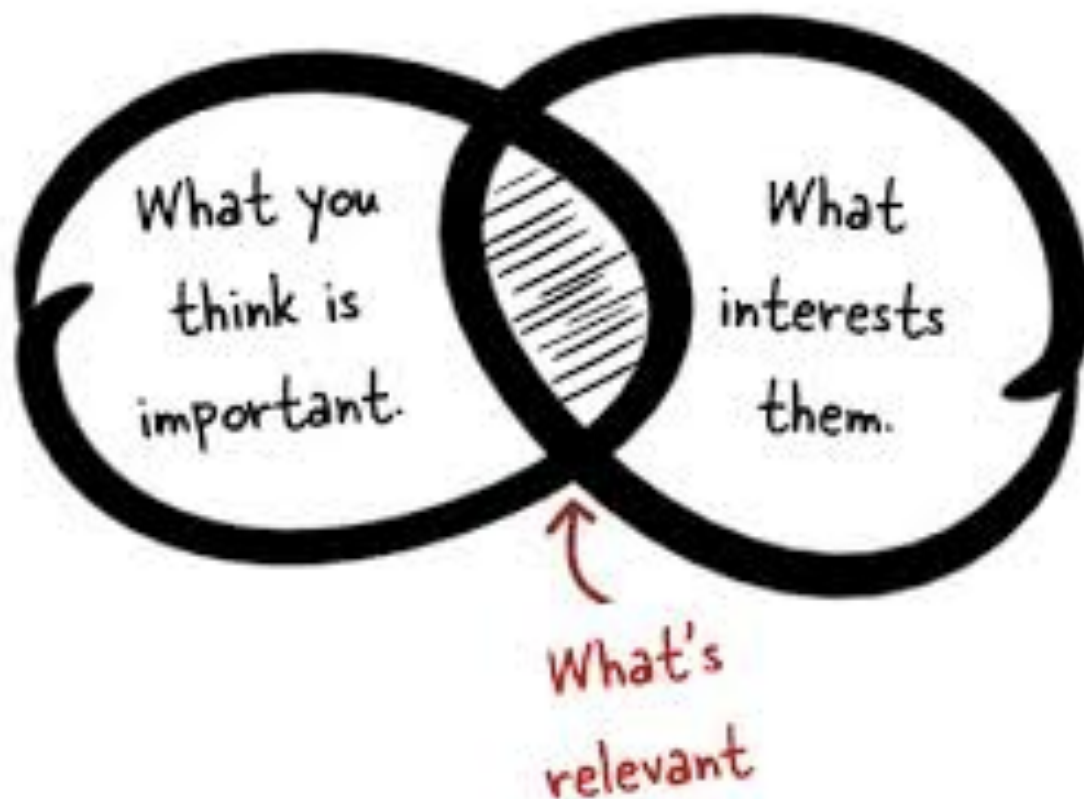


*Practice Transformation Initiative, a program of:*



# Relevance

Connect this with my daily life and context.



*Practice Transformation Initiative, a program of:*

# Immediacy

Discover & apply to my immediate needs.



*Practice Transformation Initiative, a program of:*

# Engagement

Fully engage me as an active partner.



*Practice Transformation Initiative, a program of:*

# How can this be used in Practice Transformation?



*Practice Transformation Initiative, a program of:*





## POLL:

For the PTI events in July & August, which adult learning principles were incorporated well in the design?

*Practice Transformation Initiative, a program of:*

# Sharing Stories



What does it look like to apply Adult Learning Principles in practice transformation?

*Practice Transformation Initiative, a program of:*

# Incorporating Adult Learning in your Work



*Practice Transformation Initiative, a program of:*

8/30/17



# Connection between practice facilitation and adult learning



- Your work with practices = learning environments
- For adults, learning happens by ***doing***
- Care teams in the practices are experts in their own work





## POLL:

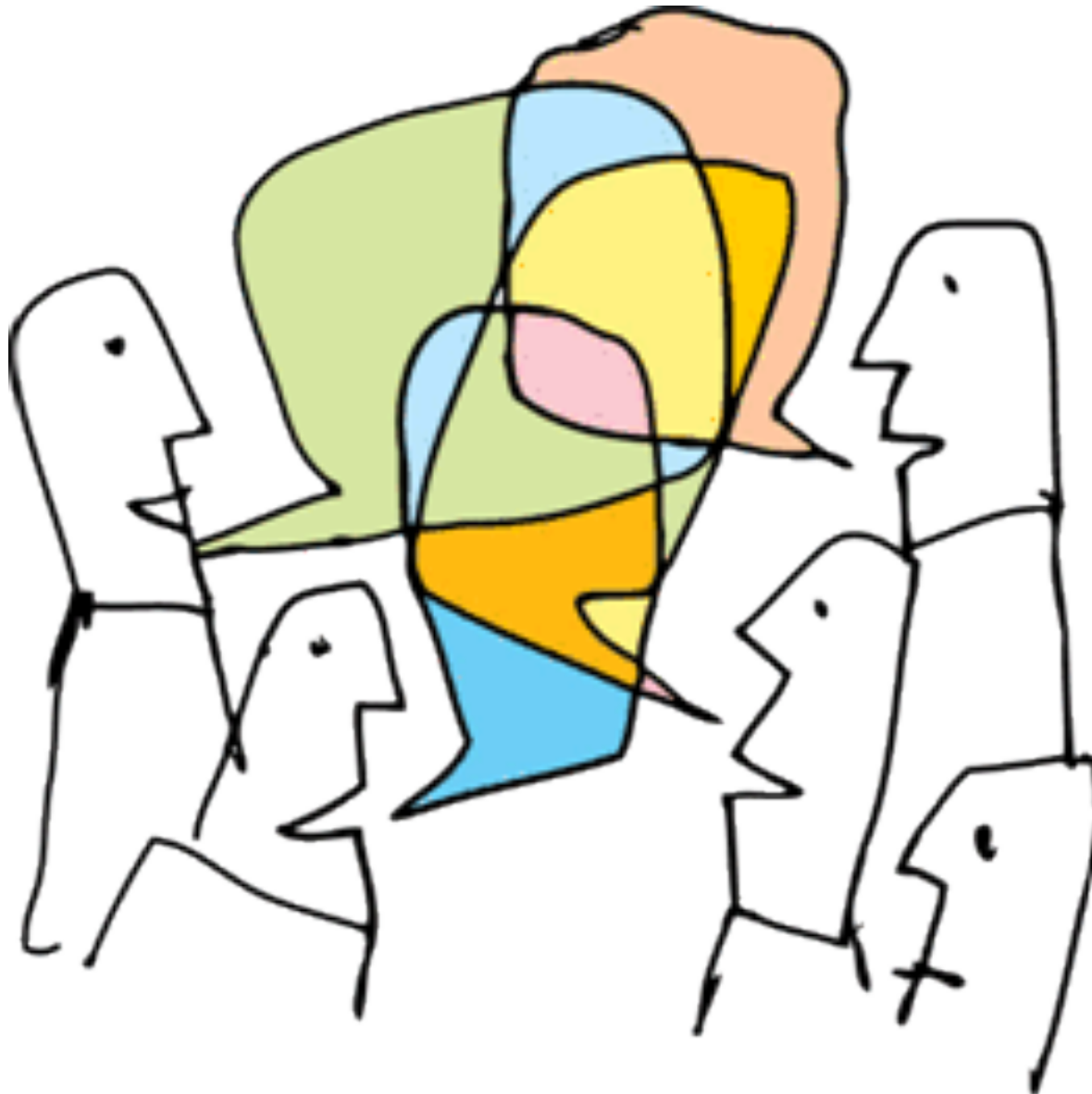
What will you apply to your work as a result of today's discussion?



*Practice Transformation Initiative, a program of:*



What  
more  
do you  
want to  
know?

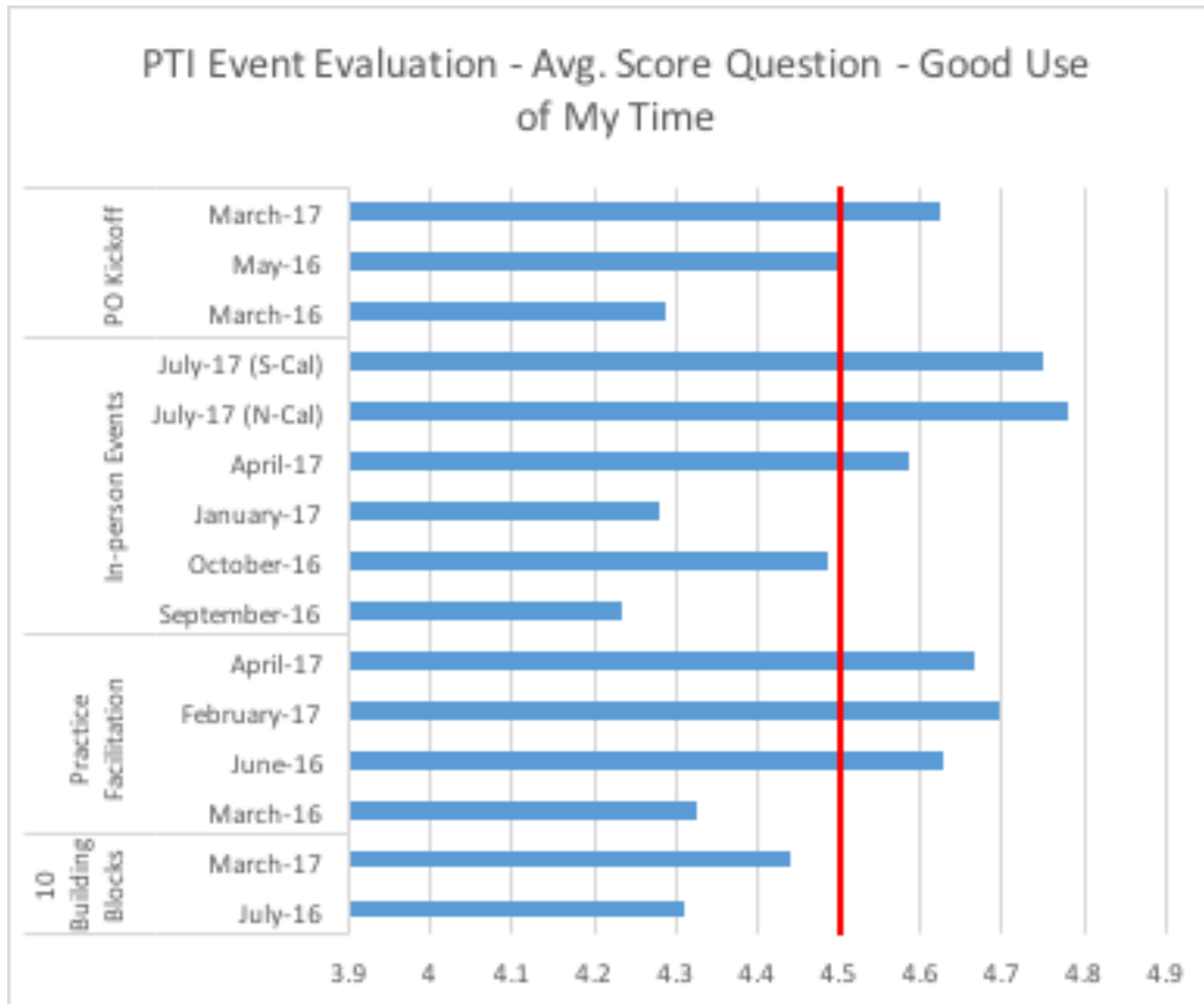


What  
else  
do  
you  
need?

*Practice Transformation Initiative, a program of:*

8/30/17

# PTI Event Evaluation Results





# UPCOMING EVENTS

- **Sept 6<sup>th</sup>** @ 10am: PTI Data Webinar

*Email [pti@iha.org](mailto:pti@iha.org) for more information and to receive the WebEx invitation.*

- **Sept 7<sup>th</sup>** @ 10am: Practice Facilitation Skills Workshop – [Storytelling for Change](#)

- **Sept 14<sup>th</sup>** @ 10am: [PFE Collaborative](#)

- **Sept 20<sup>th</sup>** @ 1:00pm: Share & Learn Webinar – [\*\*\*New & Improved PAT!\*\*\*](#)

- **Quarterly Meetings**

- [October 3-4 Quarterly Convening](#)

# Wrap-up

Thank you for participating!

Share your topic ideas and how we can improve:

**[Share & Learn Feedback Form](#)**